

SCIENCE GALLERY



THE UNIVERSITY OF
MELBOURNE

SCIENCE GALLERY MELBOURNE

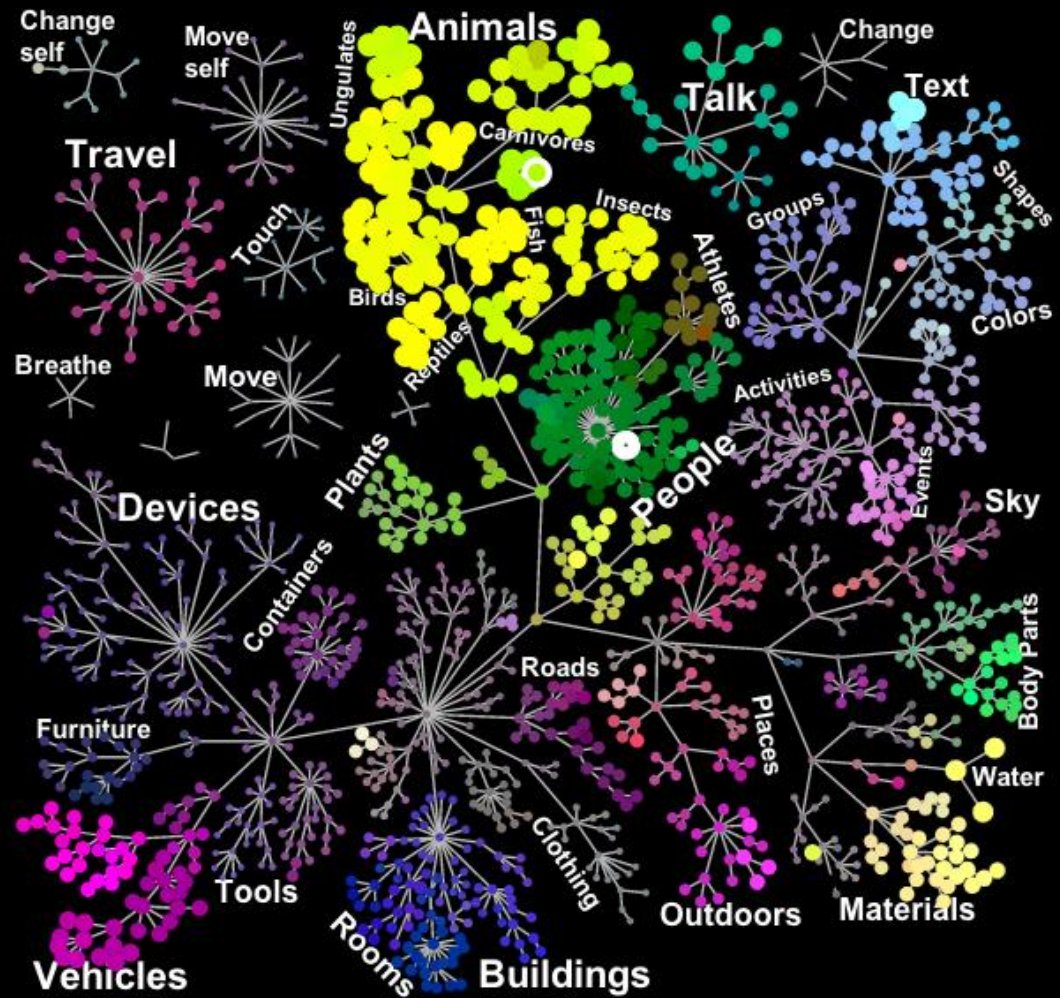
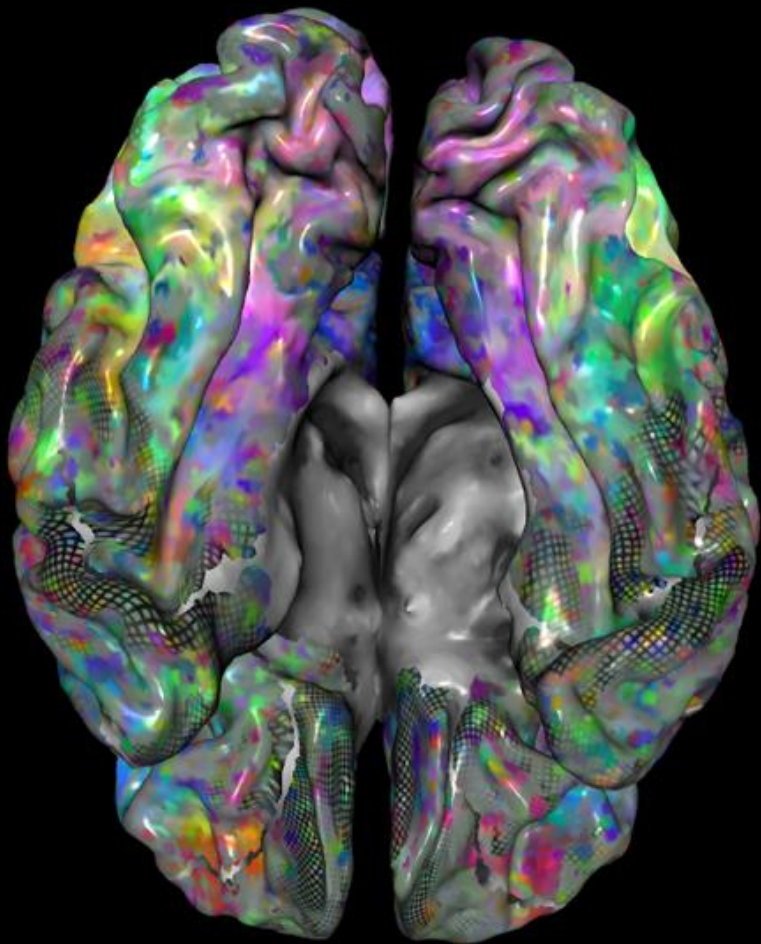
Dr Ryan Jefferies

Creative Director of Blood, Science Gallery Melbourne
ryan.jefferies@unimelb.edu.au



THE CHALLENGE: TO ENGAGE YOUNG ADULTS WITH SCIENCE

THE OPPORTUNITY: TO LAUNCH SCIENCE GALLERY MELBOURNE WITHIN MELBOURNE'S INNOVATION PRECINCT



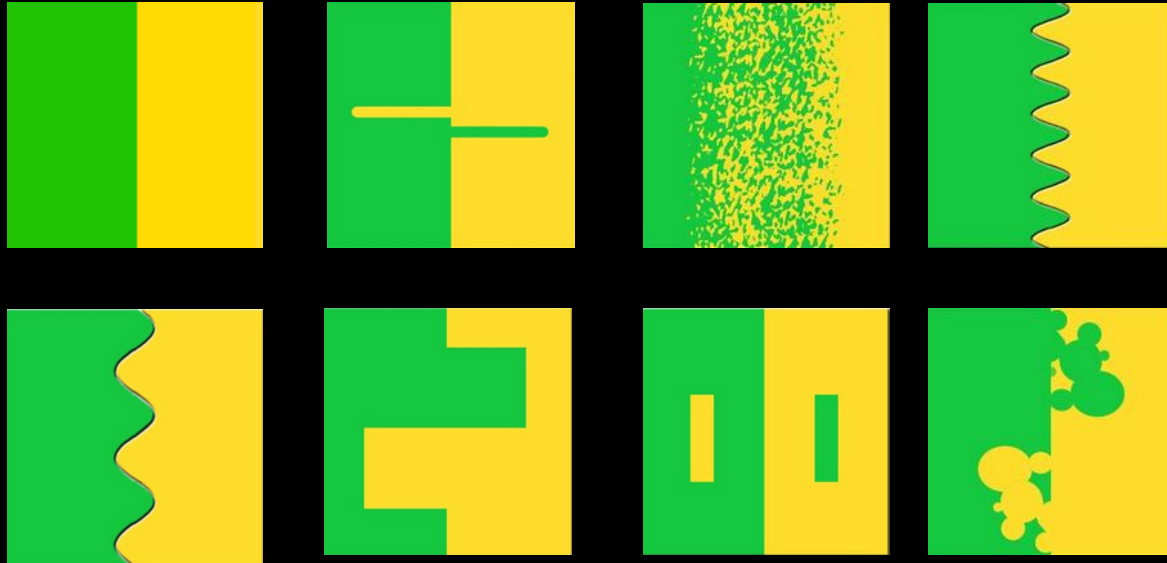
The brain's conceptual map. Image: James Gao and Alex Huth

SCIENCE

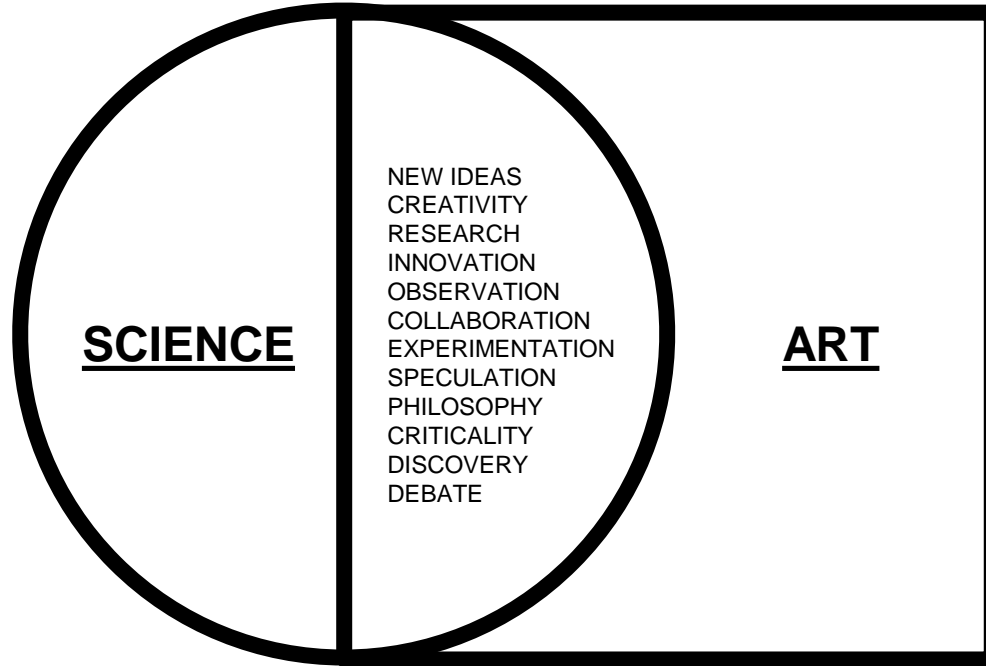
BIOLOGY
PHYSICS
CHEMISTRY
TECHNOLOGY
ENGINEERING
MATHS
[...]

ART

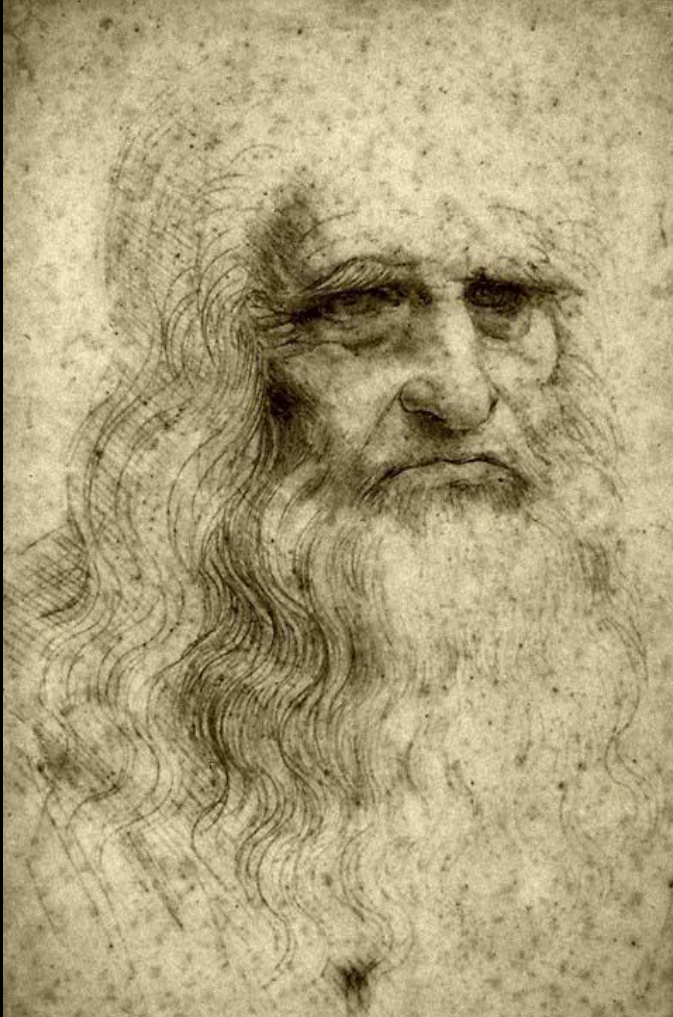
VISUAL ART
MEDIA ART
FILM
PERFORMANCE
MUSIC
DESIGN
ARCHITECTURE
[...]



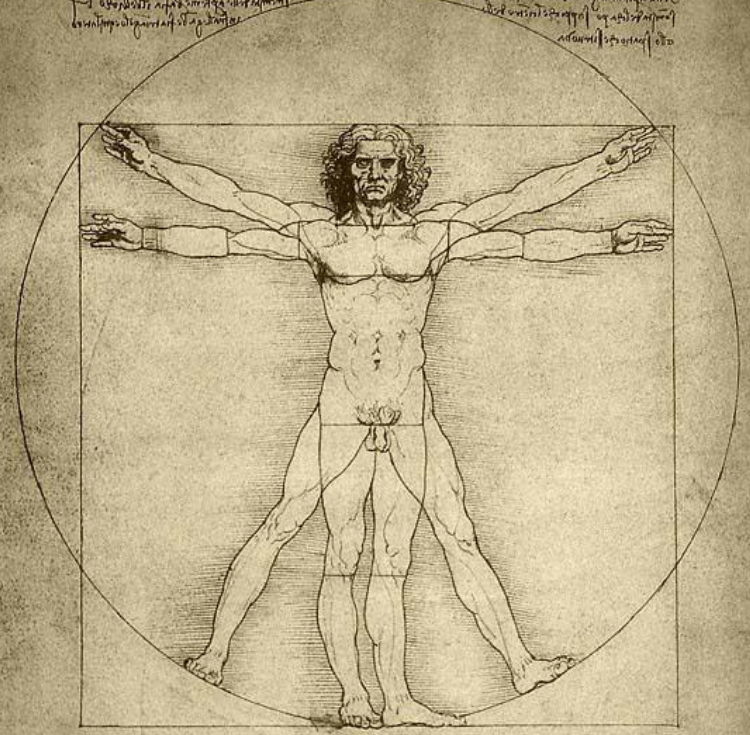
“The edge effect is where those of varied backgrounds come together in a zone of transition; a region of less structure, more diversity and more possibility... a place of transformation and movement’ — Yo Yo Ma



transdisciplinary // multidisciplinary // interdisciplinary // anti-disciplinary?

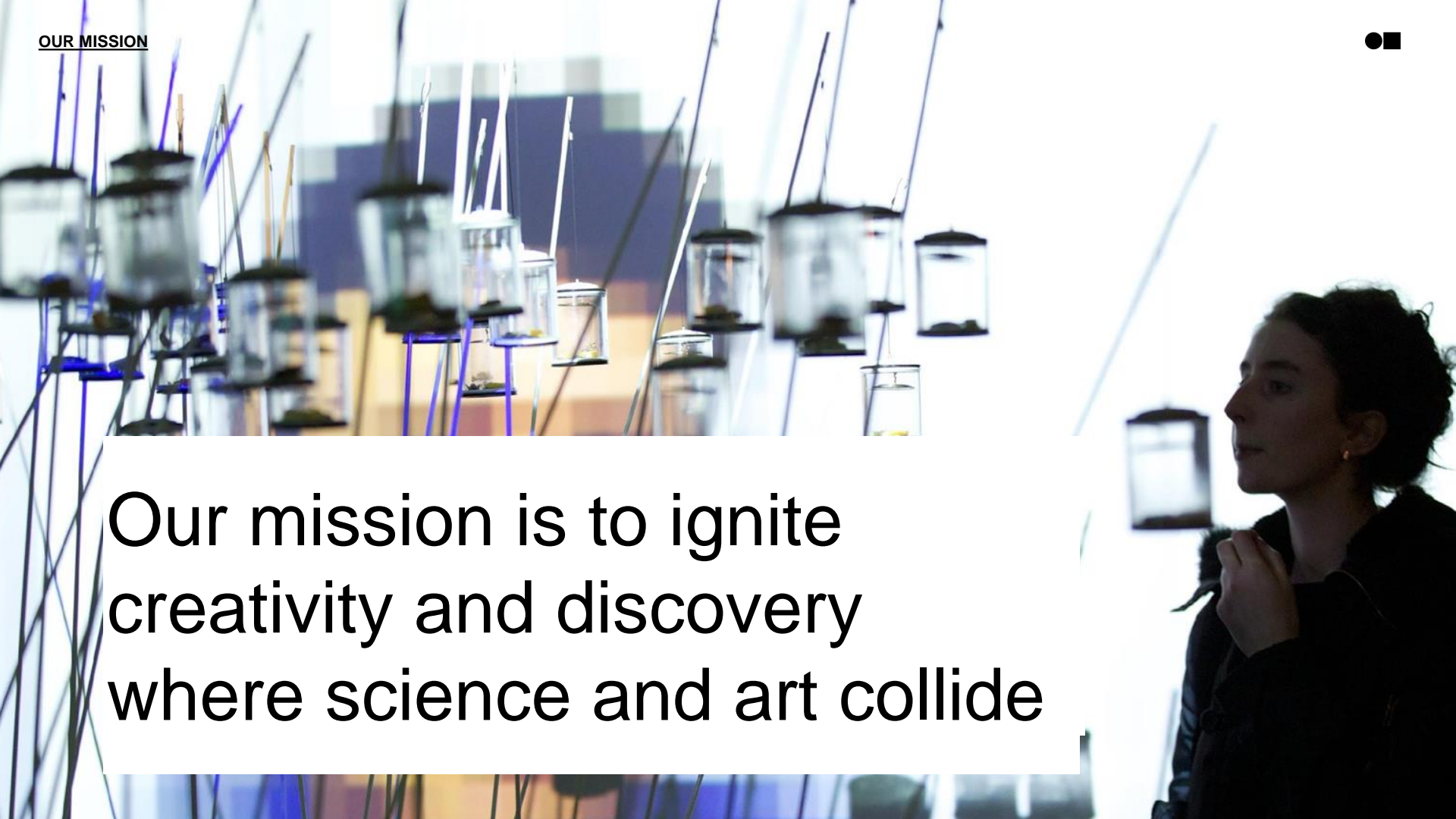


Handwritten text in a cursive script, likely a manuscript or notebook entry, located at the top of the right page. The text is dense and difficult to read due to the cursive style.

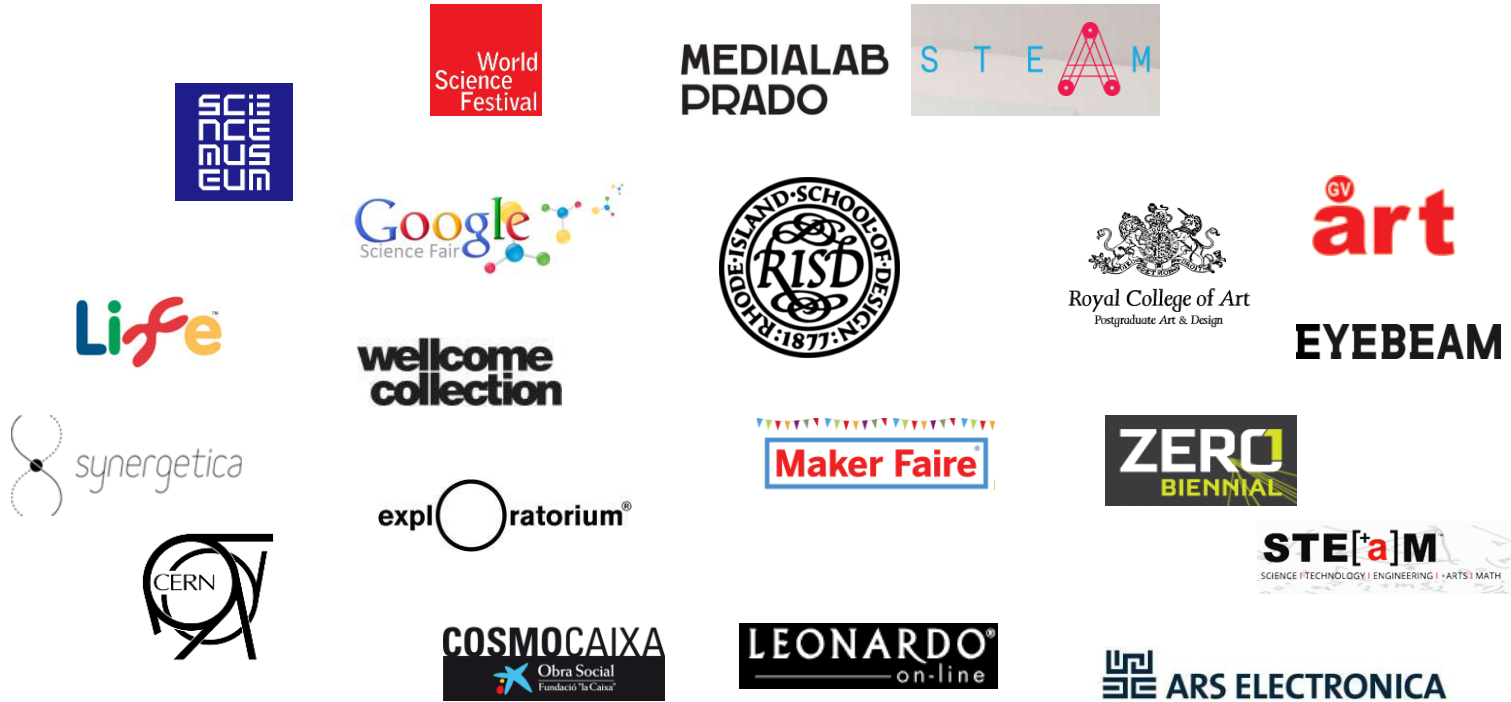


Handwritten text in a cursive script, likely a manuscript or notebook entry, located below the Vitruvian Man drawing. The text is dense and difficult to read due to the cursive style.

Handwritten text in a cursive script, likely a manuscript or notebook entry, located at the bottom of the right page. The text is dense and difficult to read due to the cursive style.



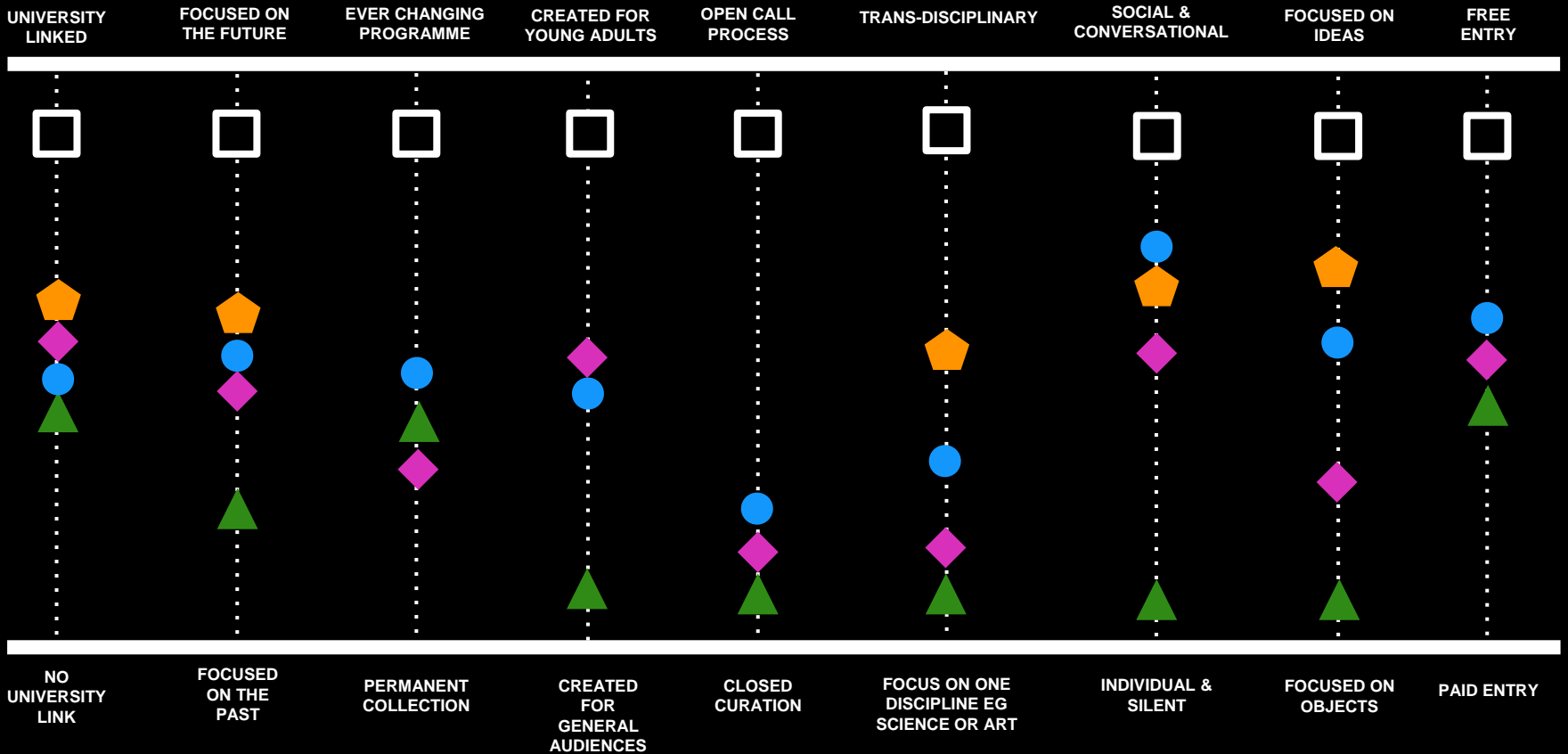
Our mission is to ignite
creativity and discovery
where science and art collide



Worlds collide:

We cross the worlds of public engagement with science, education, art/science, tech, hacking/making, design and startups.

WHAT MAKES SCIENCE GALLERY DIFFERENT?



SCIENCE GALLERY



SCIENCE CENTRES



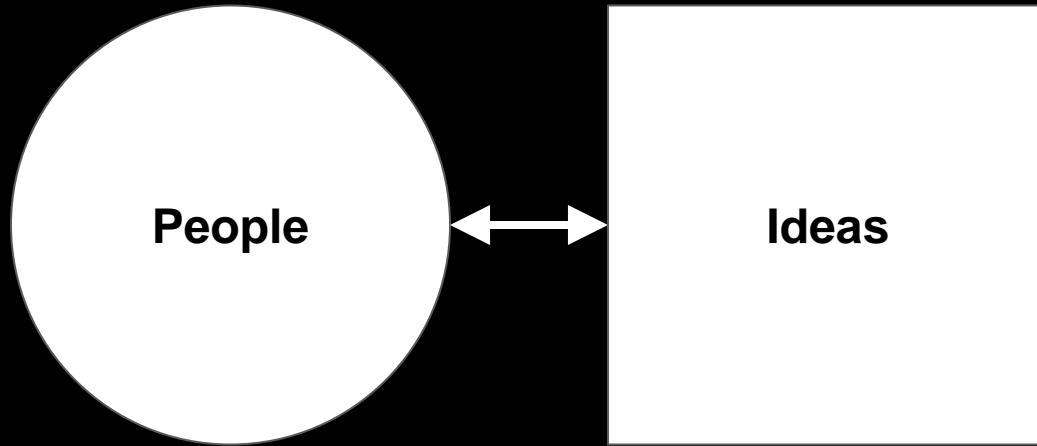
LABS & INCUBATORS



MUSEUMS & GALLERIES



SCIENCE-RELATED FESTIVALS



A particle accelerator for people, where ideas meet

HOW DO WE DO IT?

Connect

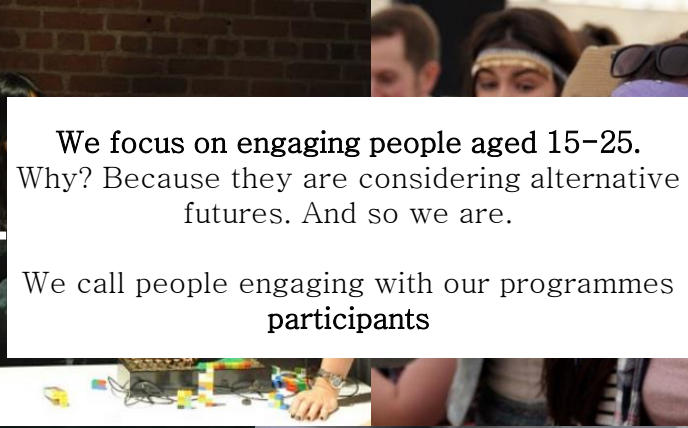
Participate

Surprise



THE PEOPLE

WHO DO WE WORK WITH?



15yrs

We focus on engaging people aged 15-25.
Why? Because they are considering alternative
futures. And so we are.

25yrs

We call people engaging with our programmes
participants



WHO DO WE WORK WITH?

We call people who contribute to our programmes or work with us to create them **Collaborators**.

Our Collaborators come from diverse backgrounds and experience levels.

Activists

Adventurers

Animators

App Developers

Architect

Artist

Athlete

Author

Biohacker

Biologist

Comedian

Chef

Composer

Computer Scientist

Crystal Supplier

Designer

Director

Economist

Engineer

Entrepreneur

Environmentalist

Ethicist

Fashion Designer

Filmmaker

Gallerist

Game Designer

Inventor

Local Authority

Magician

Manufacturer

Media Artist

Medical Doctor

Music Producer

Musician

Performance Artist

Photographer

Producer

Product Designer

Psychologist

Scholar

Scientist

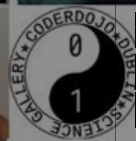
Sound Engineer

Student

Technician

Surgeon

Writer







THE IDEAS

60%

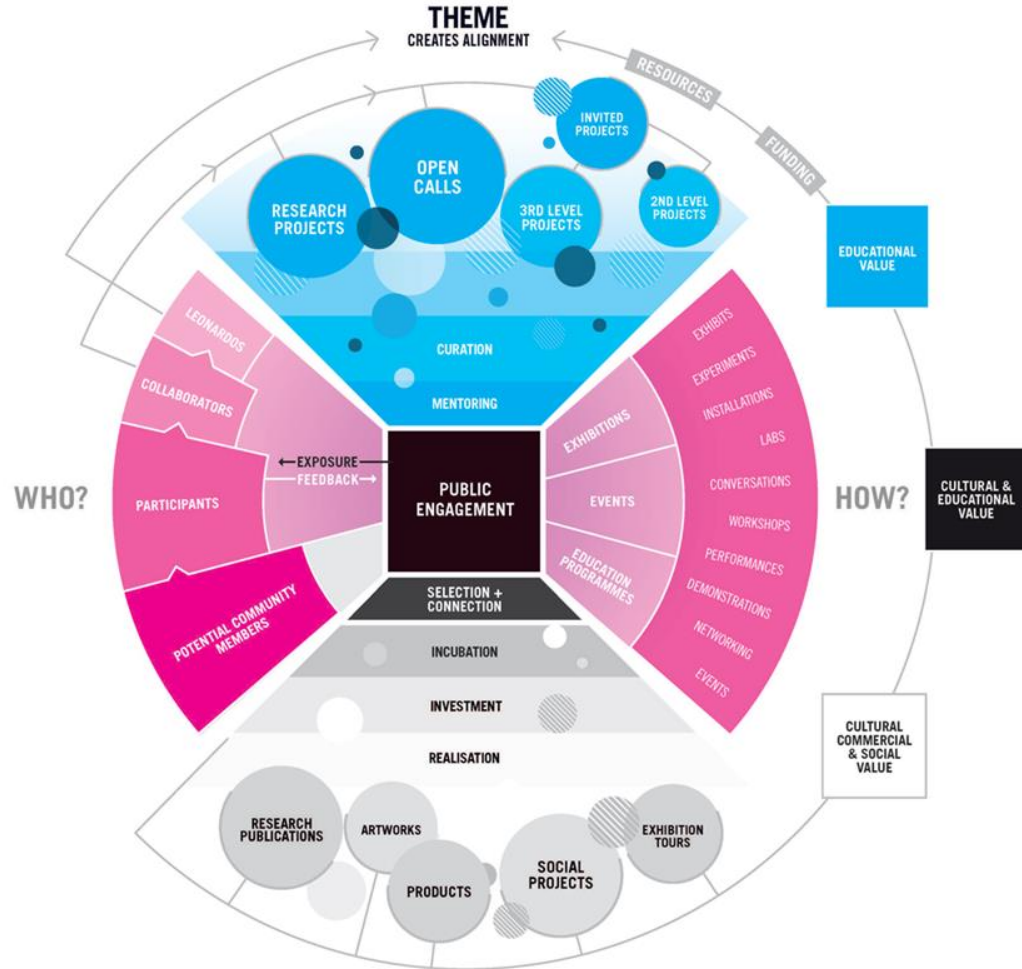
Via Open Call

81%

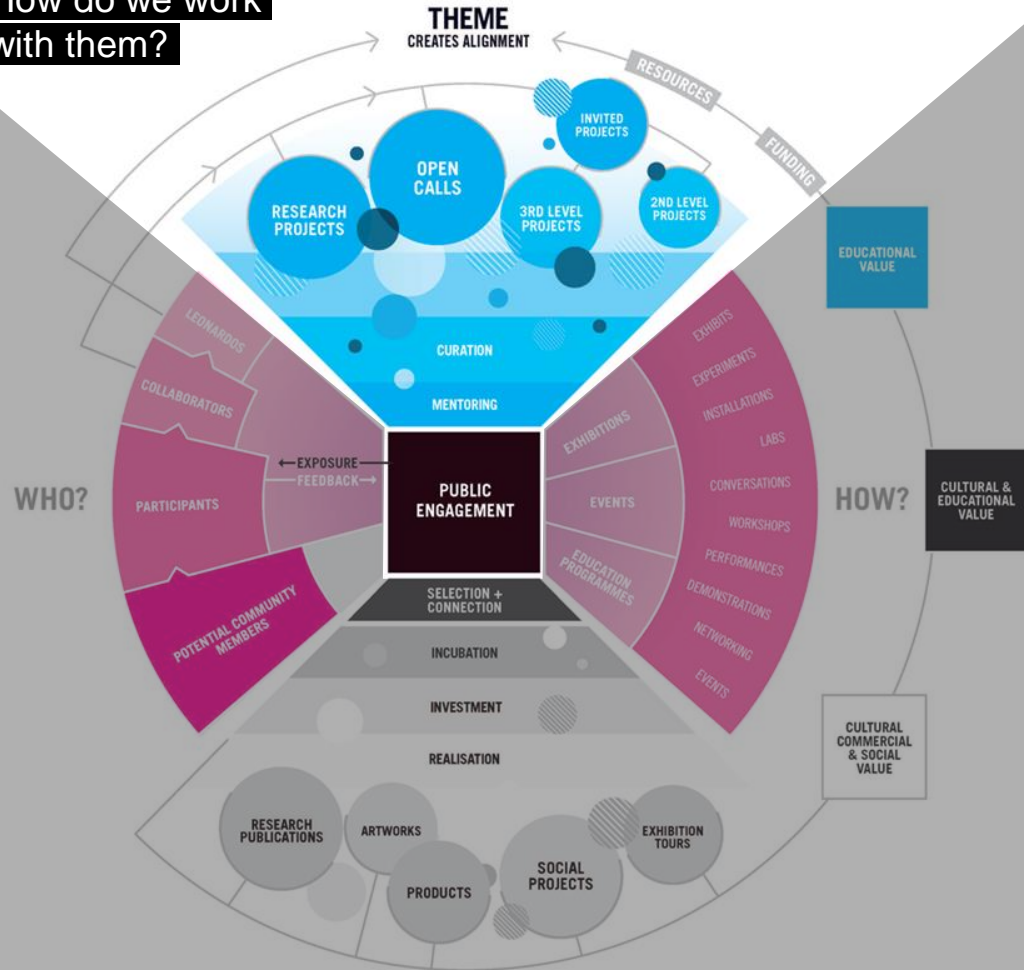
1st time collaborators

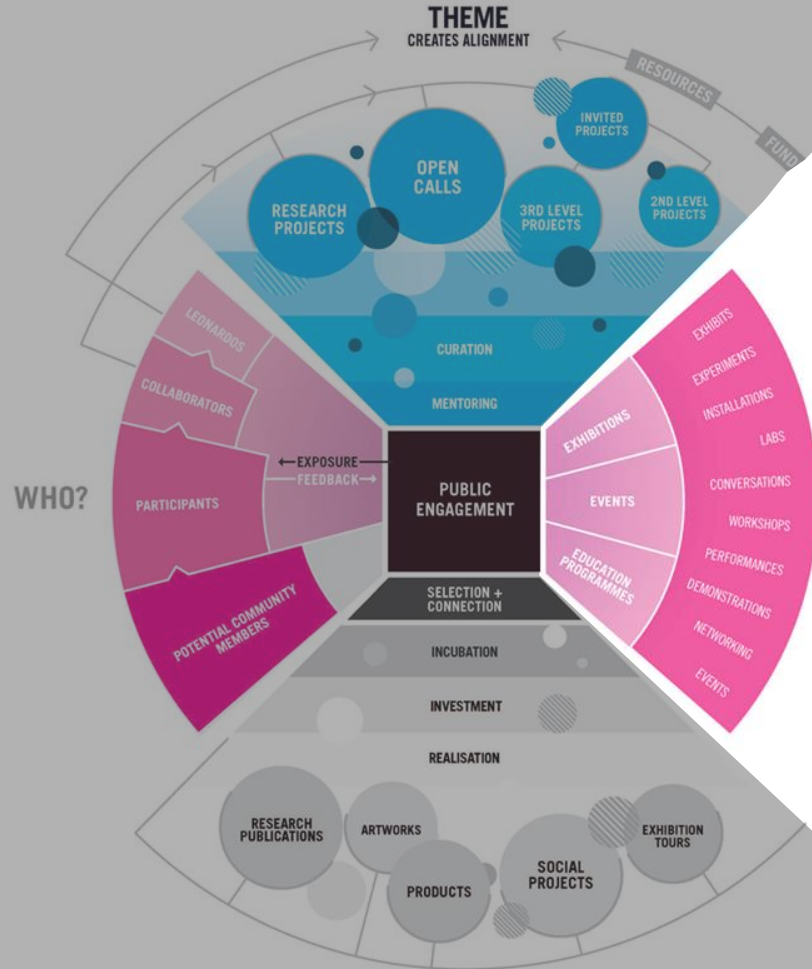
54%

New projects



How do we work with them?





What kind of programmes do we create?

What kinds of work are included in our programmes?

WHAT DO KIND OF THEMES DO WE CREATE SEASONS AROUND?



LIGHTWAVE

READY TO BE ILLUMINATED?



ARTBOTS

THE ROBOT TALENT SHOW



INFECTIOUS

STAY AWAY



LOVELAB

THE SCIENCE OF DESIRE



BIORHYTHM

MUSIC AND THE BODY



GREEN MACHINES

KICKSTART THE REVOLUTION



VISCERAL

THE LIVING ART EXPERIMENT



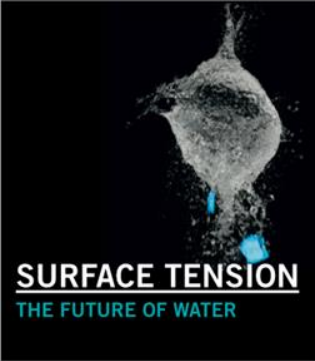
MEMORY LAB

HAVE I SEEN YOU BEFORE?



HUMAN+

THE FUTURE OF OUR SPECIES



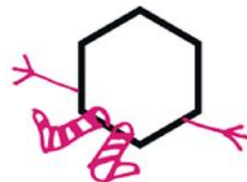
SURFACE TENSION

THE FUTURE OF WATER



EDIBLE

THE TASTE OF THINGS TO COME



HACK THE CITY

TAKE CONTROL



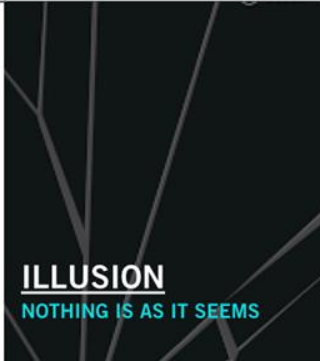
GAME

THE FUTURE OF PLAY



RISK LAB

HAVE I SEEN YOU BEFORE?



ILLUSION

NOTHING IS AS IT SEEMS



FAILBETTER

EVER TRIED. EVER FAILED.



BLOOD

NOT FOR THE FAINT-HEARTED



SECRET

NOTHING TO SEE HERE

WHAT DO THESE PROJECTS LOOK LIKE?



WHAT DO THESE PROJECTS LOOK LIKE?



Kiss Culture by Maria Phelan from **INFECTIOUS: STAY AWAY**





Over 2 million
visitors

Multi-award-winning

38% audience aged
15-25



5th most popular
free visitor attraction
in Ireland

Irish print &
broadcast coverage
valued at over
€40M

Ireland's leading
cultural organisation
on social media

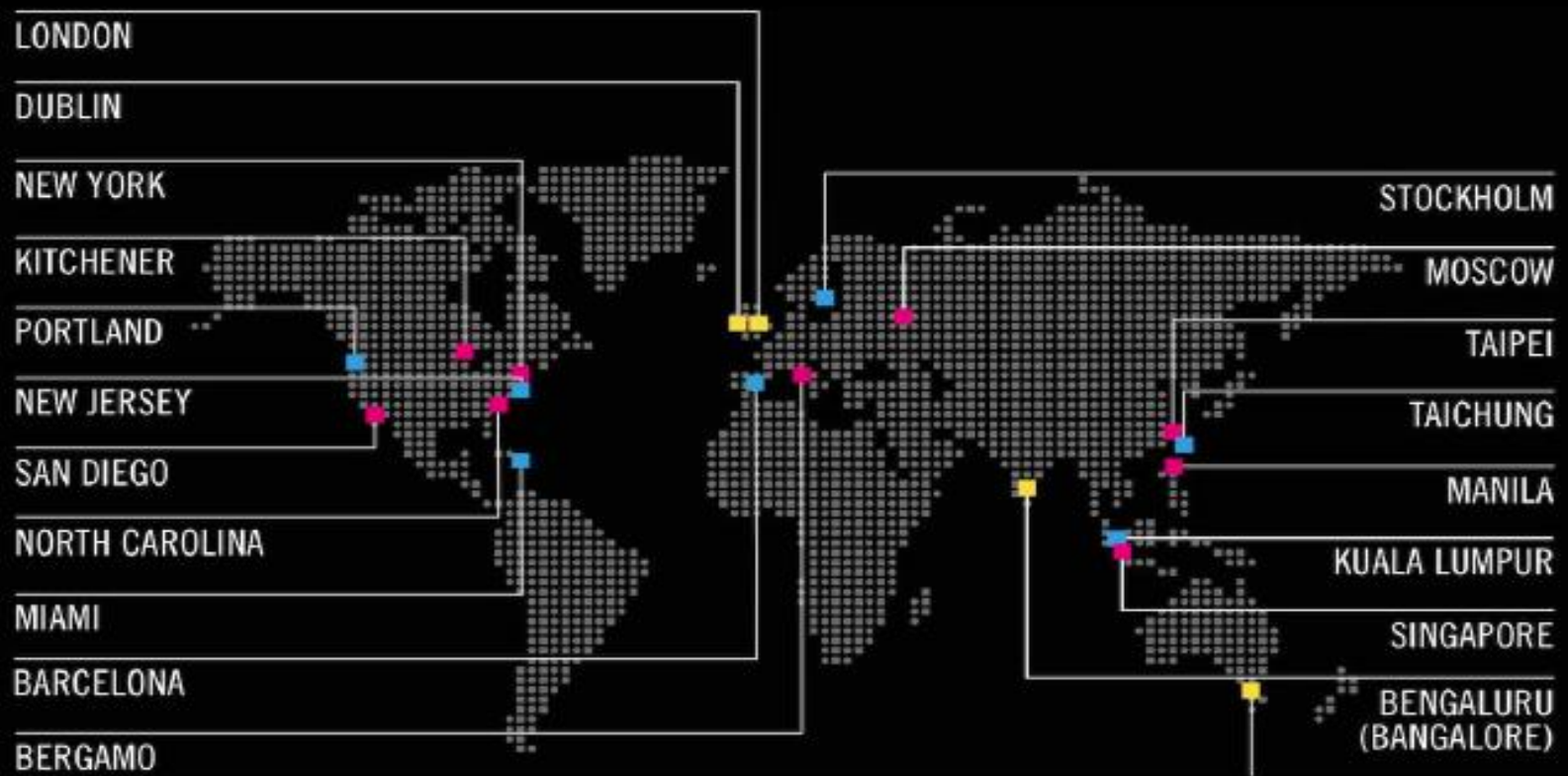
THE DUBLIN EXPERIENCE



GOING GLOBAL



From venue to Network



■ PAST TOUR VENUES

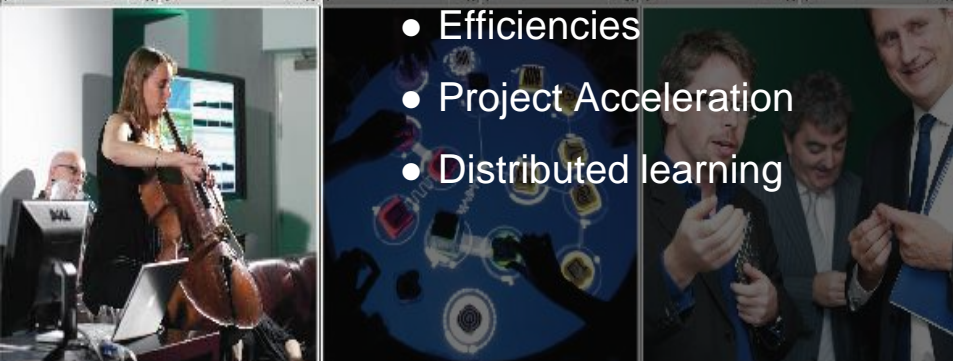
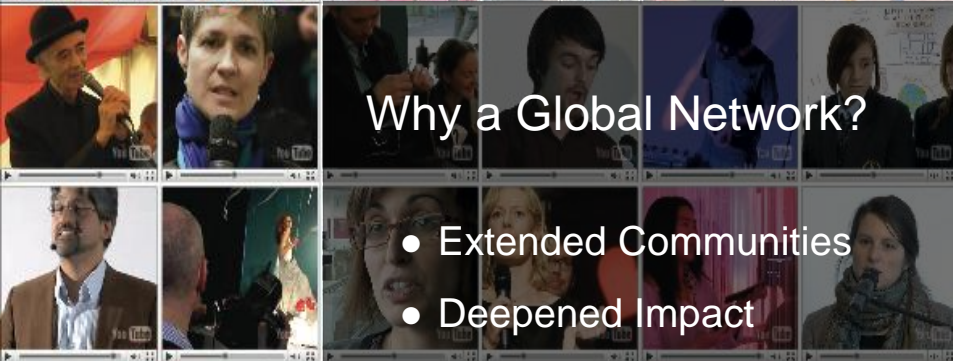
■ CURRENT & UPCOMING VENUES

■ CONFIRMED GLOBAL SCIENCE GALLERY LOCATIONS



Why a Global Network?

- Extended Communities
- Deepened Impact
- Efficiencies
- Project Acceleration
- Distributed learning



THE EMERGENT NETWORK

SCIENCE GALLERY INTERNATIONAL



The Global Network in numbers



3M

visitors engaging
with the galleries
on-site
annually



8

galleries at leading
universities and
research
institutions



32

exhibitions
generated
annually across
the globe



50M

engaged via digital
activity & media
coverage



20+

exhibitions touring
the globe
annually



1600+

workshops,
talks & events
per year



400+

staff throughout the
Network



400+

thought leaders at
the Annual
Leonardo Summit

Pearse St
Station

R136

Science Gallery Dublin
Opened 2008

Trinity College
Dublin

Grafton Street

R136

The National Wax
Museum Plus

R814

R802

R116

R143

Tara Street

City Quay

O'Connell Bridge

R802

R105

R801



JANUARY MARCH MAY JULY AUGUST SEPTEMBER OCTOBER NOVEMBER DECEMBER

2015

13.02.15-17.04.15

LIFE

SCIENCE GALLERY AT KING'S COLLEGE LONDON

The Gherkin

The Shard

Tallest building in the European Union.

Tower Bridge

London Bridge

News Int. HQ

London Bridge Station

Guy's & St. Thomas Hospital
Location of King's Health Partners, School of Medicine. Tallest hospital in the world.

Borough Market

Science Gallery London connects the arts, science, health and innovation in the heart of the city
Opening 2018





Science Gallery Bangalore
Opening 2018



Winners | Dublin Giftwraps A World Class Museum Science Gallery comes to B'luru

Pavan.MV@timesgroup.com

Where Art and Science collide, so goes the motto of Science Gallery. In four years, Bengaluru will witness a similar collision when it houses Asia's first and the world's third such prestigious gallery. It will offer science enthusiasts in the country a chance to meet the world's biggest brains and learn about their research and innovations. The Science Gallery is likely to be set up at the Indian Institute of Science (IISc) in 2018.

The state government on Thursday signed a memorandum of agreement with

GOOGLE MAY FUND IT

SR Patil, minister for IT and government has decided to establish Science Gallery, Bengaluru on an acre of land at a cost of Rs 25 crore on the 150-acre IISc campus. Google is also expected to fund this unique project, he said. The academic partner for SGB will be IISc, National Centre for Biological Sciences and Srishti School of Art, Design and Technology.

"If we don't get space in IISc, we will identify some other place in the city," said Patil. Though entry to SG Dublin is free and will be so in London too, the government has decided to charge nominal entry fees in Bengaluru.

SCIENCE'S SACRED SPACE

- SG in Bengaluru can expect 4 lakh visitors per year
- Till date 18 lakh people have visited SG in Dublin
- Over 20,000 science workshops conducted
- 42% of visitors have come 4-5 times.
- 40% of visitors are in the 15-25 age group
- 49% of them said interest in science grew after the gallery visit

IT'S AN HONOUR

It's a great honour to have SG here. Teaching science via experiments is not happening in schools. IISc has trained 2,500 school teachers. -Anureg Kumar | Director, IISc



SCIENCE GALLERY MELBOURNE

Science Gallery Melbourne

Opening 2018



The University of Melbourne

THE TIMES

News | Opinion | Business | Money | Sport | Life | Arts | Puzzles | Papers | Irish news | Wednesday, November 18 | Max 6C

Dublin's Science Gallery heads down under

Philip Connolly
Published at 12:01AM, November 11 2015

Science Gallery International, which began at Trinity College Dublin, is setting up in Australia as part of its expansion plans. The facility at the University of Melbourne will be the fourth Science Gallery. The second and third

More from Irish business

- AlB lays groundwork for share issue**
Last updated at 12:01AM, November 18 2015. The Dublin-based bank generated more capital, reduced its bad loans and increased its net interest margin in the third quarter of this year.
- Personas seeks €500m in O'Brien case**
Last updated at 12:01AM, November 18 2015. The company that lost out when the state's second mobile licence was awarded to a consortium led by Denis O'Brien is seeking damages.
- INM breaks eight-year losing streak**
Last updated at 12:01AM, November 18 2015. The media group has reported an increase in revenue after its digital operation made up for declines in print advertising.

The Sydney Morning Herald | **THE AUSTRALIAN**

Home | TV & Radio | TV Guide | Music | Arts | Stage | Books | BMF Art Shop | What's On | Follow us

You are here: Home - Entertainment - Art and Design

Art and innovation collide at new Science Gallery at the University of Melbourne

November 10, 2015

Dorinda Gifford-Burton
Also called: Dorinda
View more articles from Dorinda Gifford-Burton
Public Domain on Twitter | Email Dorinda

Facebook | Twitter | LinkedIn | YouTube | SoundCloud | RSS

© Email article | Print | Republish & permission

Art and innovation collide at new Science Gallery at the University of Melbourne

John Heacock's biological animations were projected on the ceiling of the State Library dome for White Night 2014. Photo: Wilma Taylor.

Heacock said she saw a recent exhibition at Dublin's Science Gallery on cyber security that included a book featuring personal details and passwords of people's LinkedIn social media accounts - including her own, printed and on display for the world to see.

It's that kind of disruptive thinking that she hopes Melbourne's Science Gallery, which will feature exhibitions curated around a set theme also explored by the other international branches of the network at the same time, will celebrate.

"When you think about (art and science) you think about someone like Steven, a formidable artist for whom the body is the canvas," Heacock says. "Steven has taught us a lot about being human. Creativity is a fundamental part of science ..."









- 75% of future jobs are expected to require STEM qualifications
- STEM jobs have grown at 1.5 times the rate of non-STEM jobs
- STEM qualified population has grown at 15 % compared to 26% cent non-STEM

- 27 % of STEM graduates are female
- 32% of Male STEM graduates reached an annual personal income in the highest bracket compared to 12% of Female STEM graduates
- 6.6% of female year 12 students undertake advanced maths









TT Mobile AU
@TTMobile_au

Utility to discover Australia TT on Mobile
(recommended if you use twitter on your smartphone)

Joined July 2014

TT Mobile AU
@TTMobile_au

Following

TT AUSTRALIA 07:13

- 1. #GIRLSTALKBOYS
- 2. #growingSTEAM
- 3. #LovelsLove
- 4. Prince
- 5. Vancouver
- 6. #ENGvPOR
- 7. App Store
- 8. EU LCS

View translation

12:13 PM - 2 Jun 2016



Reply to @TTMobile_au

Promoted Tweet

The Economist @TheEconomist Mar 28
Subscribe to The Economist today and get 12 weeks for A\$40



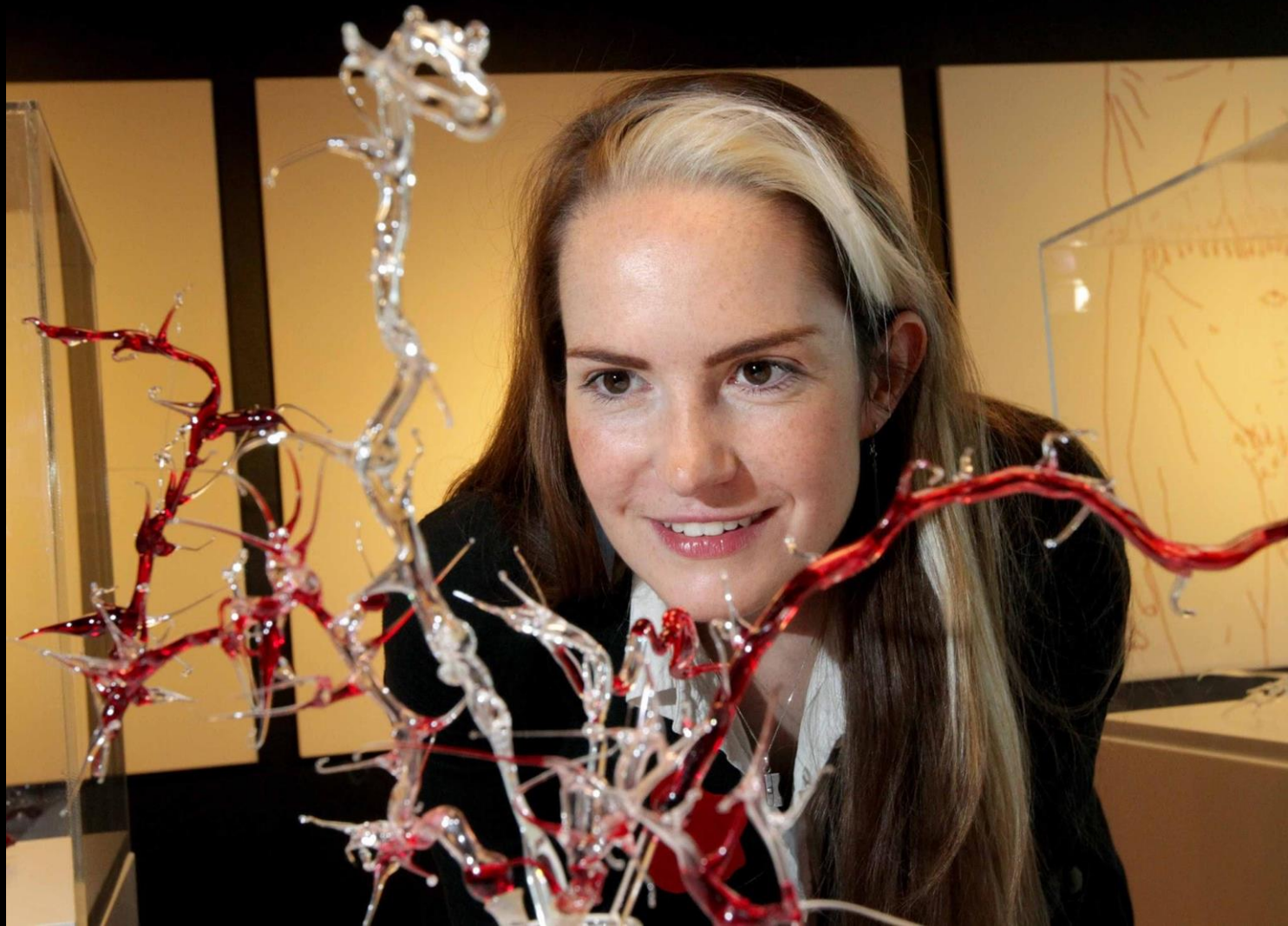
Get started with A\$40 for 12 weeks



BLOOD

NOT FOR THE FAINT-HEARTED





24.10.14–23.01.2015

BLOOD

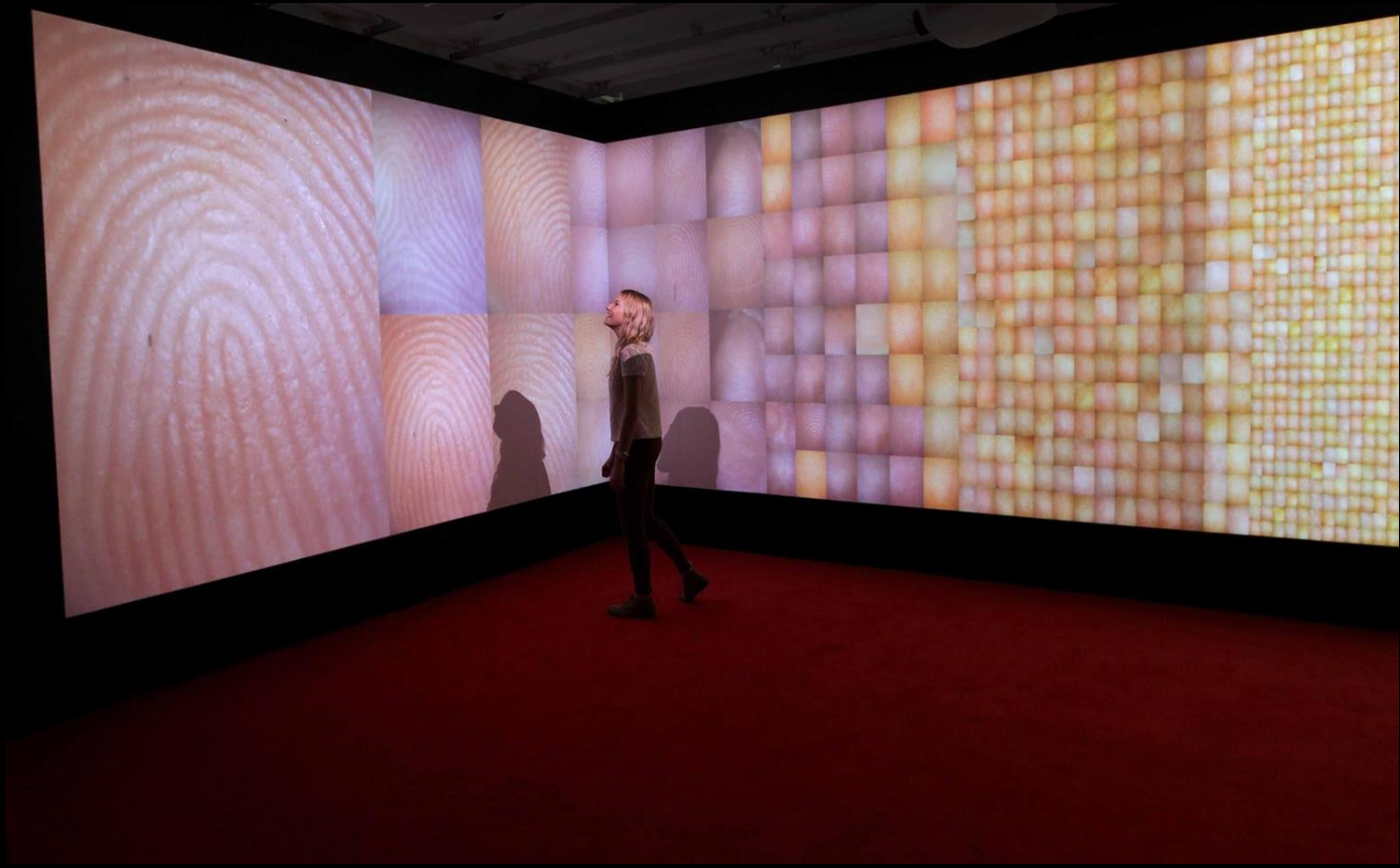
NOT FOR THE FAINT-HEARTED

Twenty five provocative works that explore the scientific, symbolic and strange nature of blood.

Recommended for 15+



taboo / commodity / symbolism / paint / mystery / ubiquitous / variety / art / medical / gothic / phobia / myth / science /
create / race / discovery / darkness / provocative / biological / medium / gruesome / fluid / vital / serum / lineage









COMING SOON



BLOOD

SCIENCE GALLERY LONDON
SCIENCE GALLERY MELBOURNE

COMING SOON

Keywords: blood, taboo, stigma, giving, identity, health, disease, sport

Call opens **8 days from now**
on **14th November 2016, 10:51pm GMT**



BLOOD

A SCIENCE GALLERY LONDON AND SCIENCE GALLERY MELBOURNE SEASON

BLOOD is the first cross-network season for Science Gallery, inspired by the original exhibition BLOOD: NOT FOR THE FAINT-HEARTED at Science Gallery Dublin in 2015.

Blood is essential for life,...

[Edit...](#)

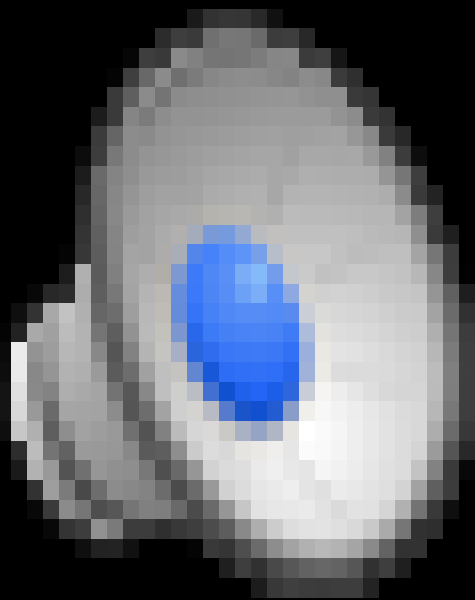
[More Information...](#)

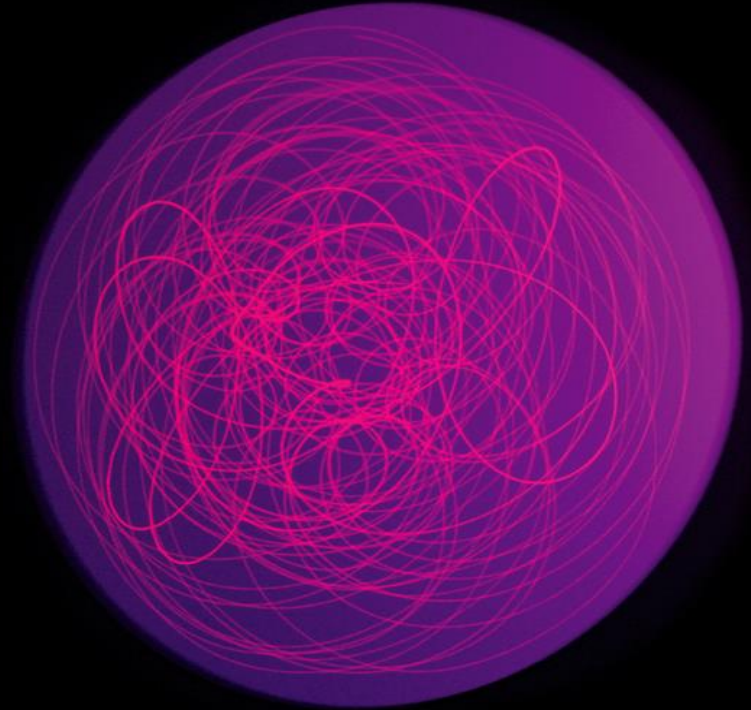


Helen
Pynor

Mike
Shattuck

Body Is A Big Place by Peta Clancy & Helen Pynor from **OSCILLATOR**: EVERYTHING IN MOTION





Questions?